



E & A CONSULTING GROUP, INC.

Engineering Answers

10909 Mill Valley Road, Suite 100 • Omaha, NE 68154-3950
P 402.895.4700 • F 402.895.3599
www.eacg.com

Dear Homeowner:

The SID has contracted concrete work to be done on the streets in your SID. A contractor will be on site to do work which includes removing the existing concrete that is damaged and replacing it with new pavement.

Throughout the course of this project, there could be some minimal damage done to yards and or sprinkler systems. The contractor that is on site will be responsible for replacing any damaged sprinkler lines and/or heads. They will also be replacing any sod that is torn up while on site. Once the new sod is laid, it will be the responsibility of the homeowner at each lot to water the new sod until it has re-established itself.

Before starting the work on site, each contractor must put in a call and have all the utilities in the area located. You might notice some areas in your yard that have been flagged and/or spray painted. This does not indicate the area in which they will be working. It is just to give them an idea of what kind of utilities are in the area that could possibly be hit while the contractor is on site working.

All work that is completed in public Right-of-Way and follow City of Omaha and Sarpy County specifications.

The work in your SID should not take longer than 30 days to complete. Please let me know if you have any questions or concerns on this at all.

Thank You,

A handwritten signature in black ink that reads "Katlyn Bradfield". The signature is written in a cursive style.

Katlyn Bradfield

Construction Administrative Technician

Engineering Answers...to improve our communities

E & A Consulting Group, Inc.

10909 Mill Valley Road, Suite 100 • Omaha, NE 68154

402.895.4700 (o)

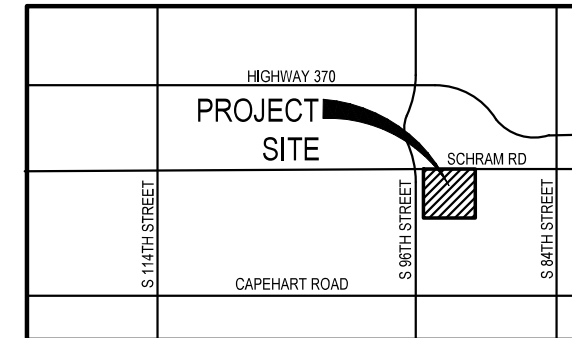
eacg.com



SUMMIT RIDGE

2024 STREET RECONSTRUCTION

SID NO. 245
SARPY COUNTY, NEBRASKA



VICINITY MAP

APPROXIMATE BID QUANTITIES

ITEM	DESCRIPTION	QUANTITY	UNIT
1	CONCRETE PAVEMENT REPAIR, LARGE AREA	635	SY
2	CONCRETE PAVEMENT REPAIR, SMALL AREA	582	SY
3	FULL DEPTH SAW CUT EXISTING PAVEMENT	1,650	LF
4	ADJUST WATER VALVE TO GRADE	1	EA
5	ADJUST MANHOLE TO GRADE	4	EA
6	REMOVE AND REPLACE PCC SIDEWALK	656	SF
7	REMOVE AND REPLACE PCC CURB RAMP	365	SF
8	REMOVE AND REPLACE IMPRINTED SURFACE	144	SF
9	CONSTRUCT DETECTABLE WARNING PANEL (9 locations)	84	SF
10	REMOVE AND REPLACE FAULTY SUBGRADE	25	TN
11	ADJUST SPRINKLER (AS NEEDED)	7	EA



INDEX OF SHEETS

SHEET NO.	DESCRIPTION
1	COVER
2	DETAILS
3	NORTH
4	SOUTH
5	TOTAL QUANTITIES
6	COMPOSITE MAP



APPLICANT

SID # 245
Scott Oswald, Chairman
11440 West Center Road, Ste. C
Omaha, NE 68114
P: 402.334.0700
F: 402.334.0815
mjohnson@fdjlaw.com

DESIGNER

E & A Consulting Group, Inc
Teresa Wooten, P.E.
10909 Mill Valley Road, Suite 100
Omaha, NE 68154
P: 402.895.4700
F: 402.895.3599
twooten@eacg.com

INSPECTOR

E & A Consulting Group, Inc
Randall L. Pierce, P.E.
10909 Mill Valley Road, Suite 100
Omaha, NE 68154
P: 402.895.4700
F: 402.895.3599
rpierce@eacg.com

CONTRACTOR

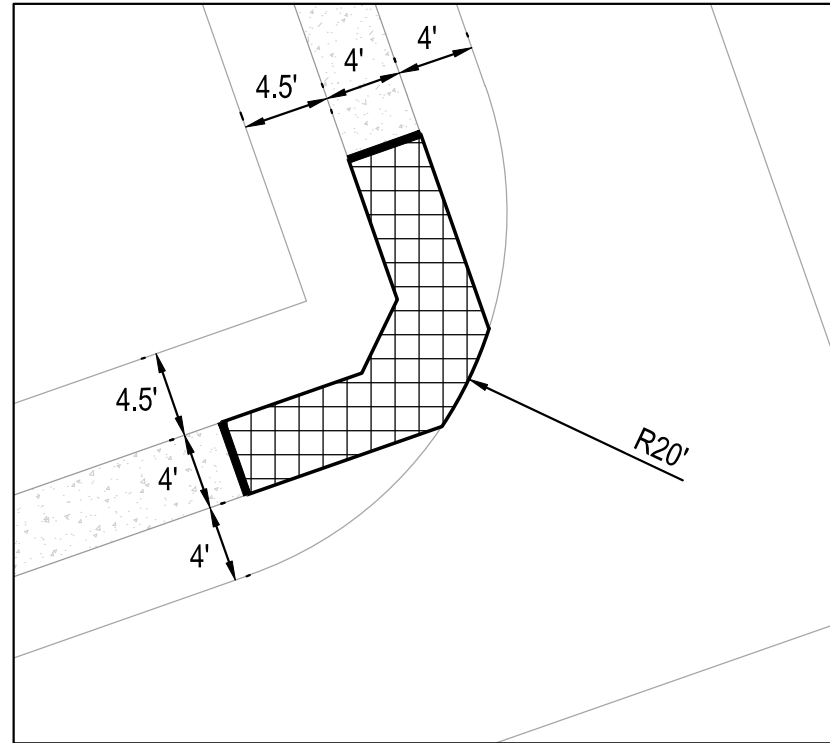
E & A CONSULTING GROUP, INC.
Engineering • Planning • Environmental & Field Services
10909 Mill Valley Road, Suite 100 • Omaha, NE 68154
Phone: 402.895.4700 • Fax: 402.895.3599
www.eacg.com
State of NE Certificate of Authorization #C40008

**SUMMIT RIDGE
2024 STREET
RECONSTRUCTION**
SID 245
SARPY COUNTY, NEBRASKA



COVER

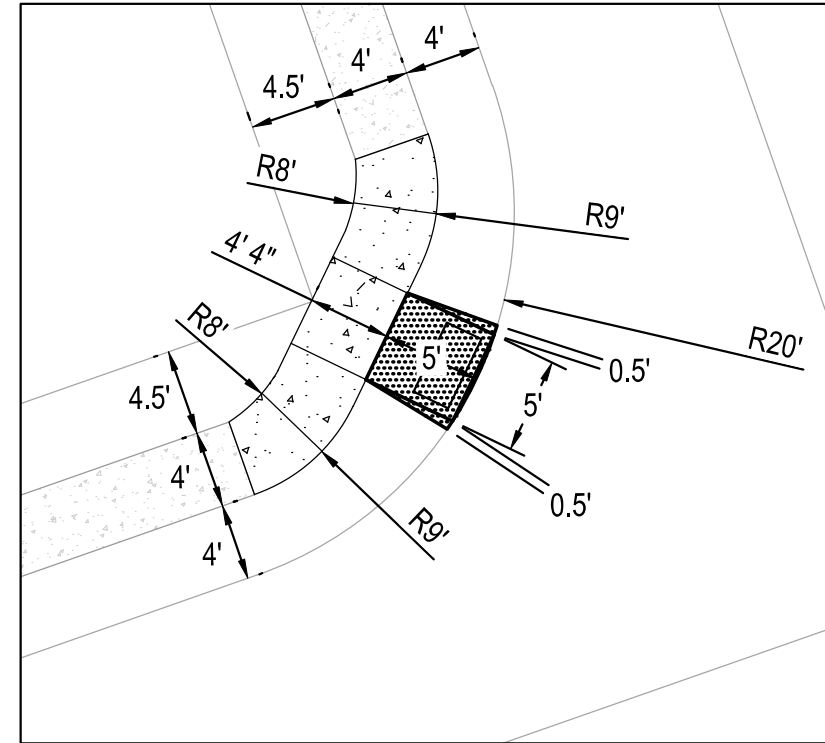
Revisions	Date	Description
1	3/14/2024	TAM
2	JME	JME

Proj No: P2023.019.022
Date: 3/14/2024
Designed By: TAM
Drawn By: JME
Scale: 1" = 400'
Sheet: 1 of 6


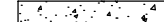


TYPICAL
CURB RAMP AND SIDEWALK REMOVAL
 SCALE 1" = 10'

-  CONCRETE REMOVAL PER LOCATION = ± 99 FT²
-  FULL DEPTH SAWCUT PER LOCATION = 8 L.F.



TYPICAL
CURB RAMP AND SIDEWALK CONSTRUCTION
 SCALE 1" = 10'

-  CONSTRUCT CURB RAMP PER LOCATION = ± 30 FT²
-  CONSTRUCT SIDEWALK PER LOCATION = ± 80 FT²



Revisions	Date	Description
1	3/14/2024	

Proj No: P20030191022
 Date: 3/14/2024
 Designed By: TMM
 Drawn By: JMB
 Scale: 1" = 10'
 Sheet: 2 of 6

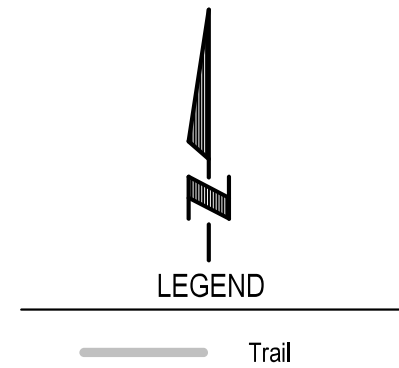
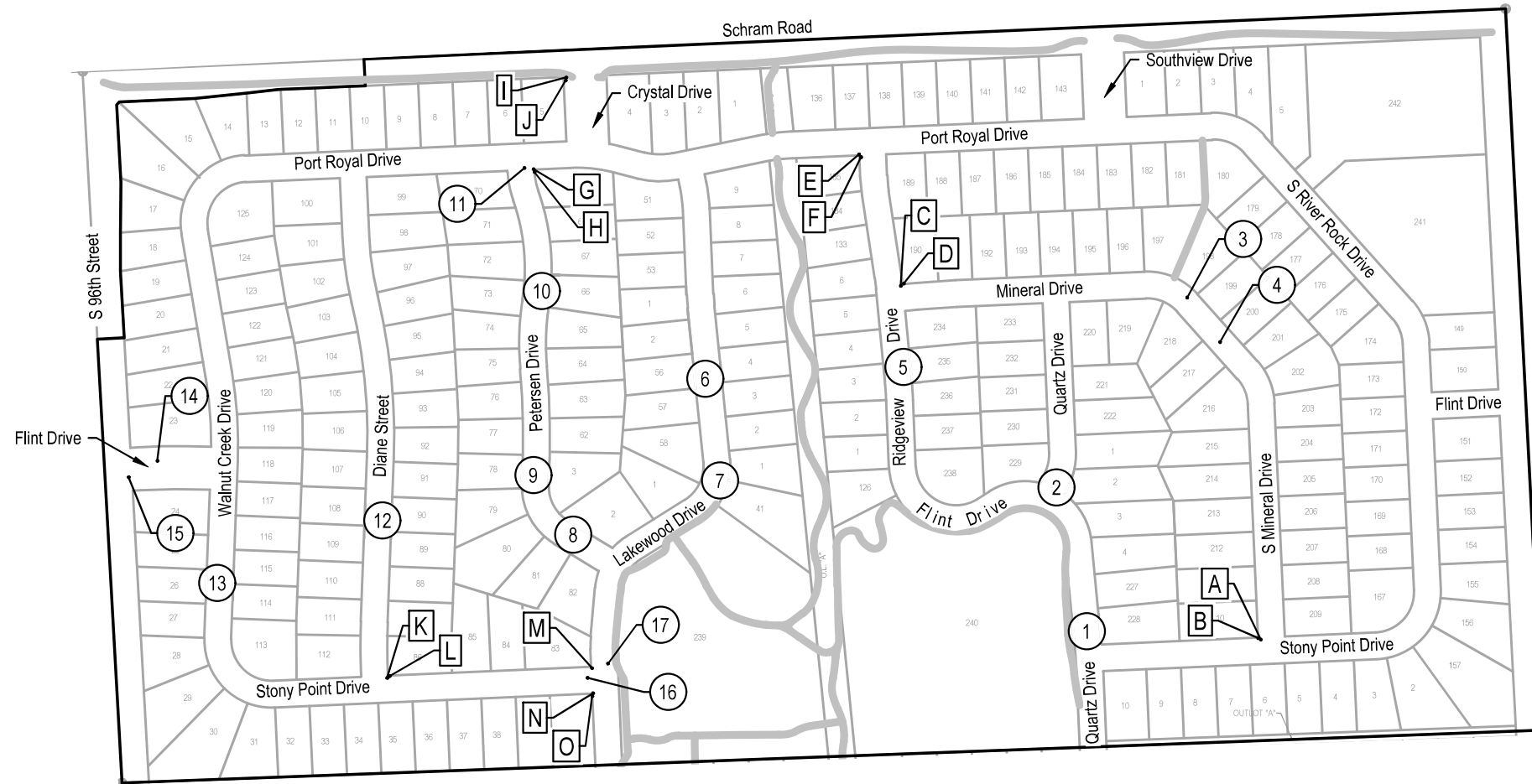
DETAILS

SUMMIT RIDGE
 2024 STREET
 RECONSTRUCTION
 SID 245
 SARPY COUNTY, NEBRASKA



E & A CONSULTING GROUP, INC.
 Engineering • Planning • Environmental & Field Services

10809 Mill Valley Road, Suite 100 • Omaha, NE 68154
 Phone: 402.295.4700 • Fax: 402.295.3599
 www.eaeng.com
 State of NE Certificate of Authorization #C40008

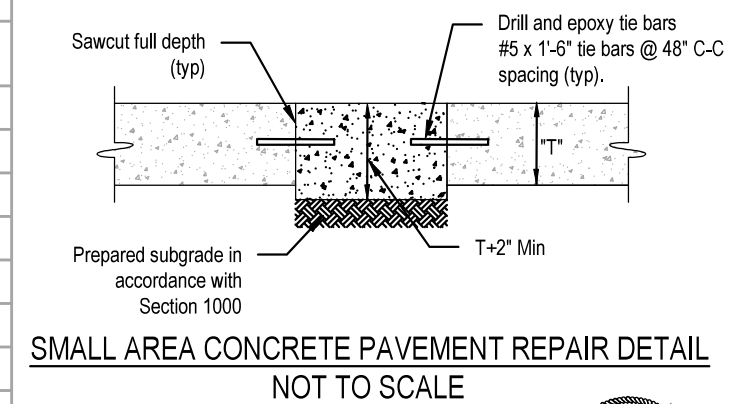


2024 STREET RECONSTRUCTION

AREA NO.	TYPE	APPROX. DIMEN.	EST S.F.	NOTES
A	Curb Ramp	5.5 x 5.0	27.5	ADA Plate - Cast Iron
B	Sidewalk	4.3 x 20.0	85.0	Adjust Sprinkler (as needed)
C	Curb Ramp	5.5 x 5.0	27.5	ADA Plate - Cast Iron
D	Sidewalk	4.3 x 20.0	85.0	Adjust Sprinkler (as needed)
E	Curb Ramp	5.5 x 5.0	27.5	ADA Plate - Cast Iron
F	Sidewalk	4.3 x 20.0	85.0	Adjust Sprinkler (as needed)
G	Curb Ramp	5.5 x 5.0	27.5	ADA Plate - Cast Iron
H	Sidewalk	4.3 x 20.0	85.0	Adjust Sprinkler (as needed)
I	Curb Ramp	4.0 x 14.0	56.0	ADA Plate - Cast Iron (2'x10')
J	Sidewalk	6.5 x 20.0	130.0	Adjust Sprinkler (as needed)
K	Curb Ramp	5.5 x 5.0	27.5	ADA Plate - Cast Iron
L	Sidewalk	4.3 x 20.0	85.0	Adjust Sprinkler (as needed)
M	Sidewalk	4.0 x 4.0	16.0	Adjust Water Valve
N	Curb Ramp	5.5 x 5.0	27.5	ADA Plate - Cast Iron
O	Sidewalk	4.3 x 20.0	85.0	Adjust Sprinkler (as needed)

2024 STREET RECONSTRUCTION									
AREA NO.	NO. POURS	SAW CUT L.F.	CURB L.F.	WIDTH	X	LENGTH	LARGE AREA EST S.Y.	SMALL AREA EST S.Y	NOTES
1	2	51	28	25.5	x	14.0		39.7	
2	1	36	10	12.8	x	10.0		14.2	
3	1	55	1	12.8	x	15.0		21.3	
4	1	41	15	12.8	x	15.0		21.3	
5	2	56	30	12.8	x	30.0		42.5	
6	2	51	20	25.5	x	10.0		28.3	
7	2	87	38	12.8	x	36.0	51.0		
				12.8	x	24.0	34.0		
8	2	51	60	25.5	x	30.0	85.0		

2024 STREET RECONSTRUCTION									
AREA NO.	NO. POURS	SAW CUT L.F.	CURB L.F.	WIDTH	X	LENGTH	LARGE AREA EST S.Y.	SMALL AREA EST S.Y	NOTES
9	2	51	36	25.5	x	18.0		51.0	Adjust Manhole
10	2	51	50	25.5	x	25.0	70.8		Adjust Manhole
11	1	37	13	13.0	x	12.0		17.3	
12	1	51	25	12.8	x	25.0		35.4	
13	2	58	32	12.8	x	32.0		45.3	
14	1	39		12.8	x	13.0		18.4	
15	1	80		12.0	x	28.0		37.3	
16	2	51	24	25.5	x	12.0		34.0	
17	1	47	15	12.8	x	18.0		25.5	



E & A CONSULTING GROUP, INC.
 Engineering • Planning • Environmental & Field Services

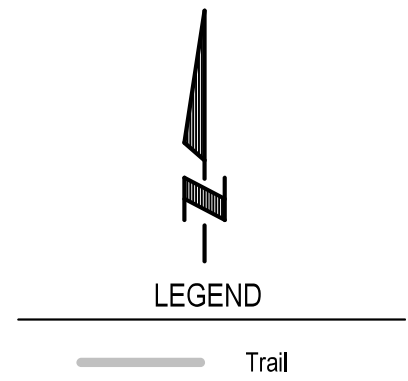
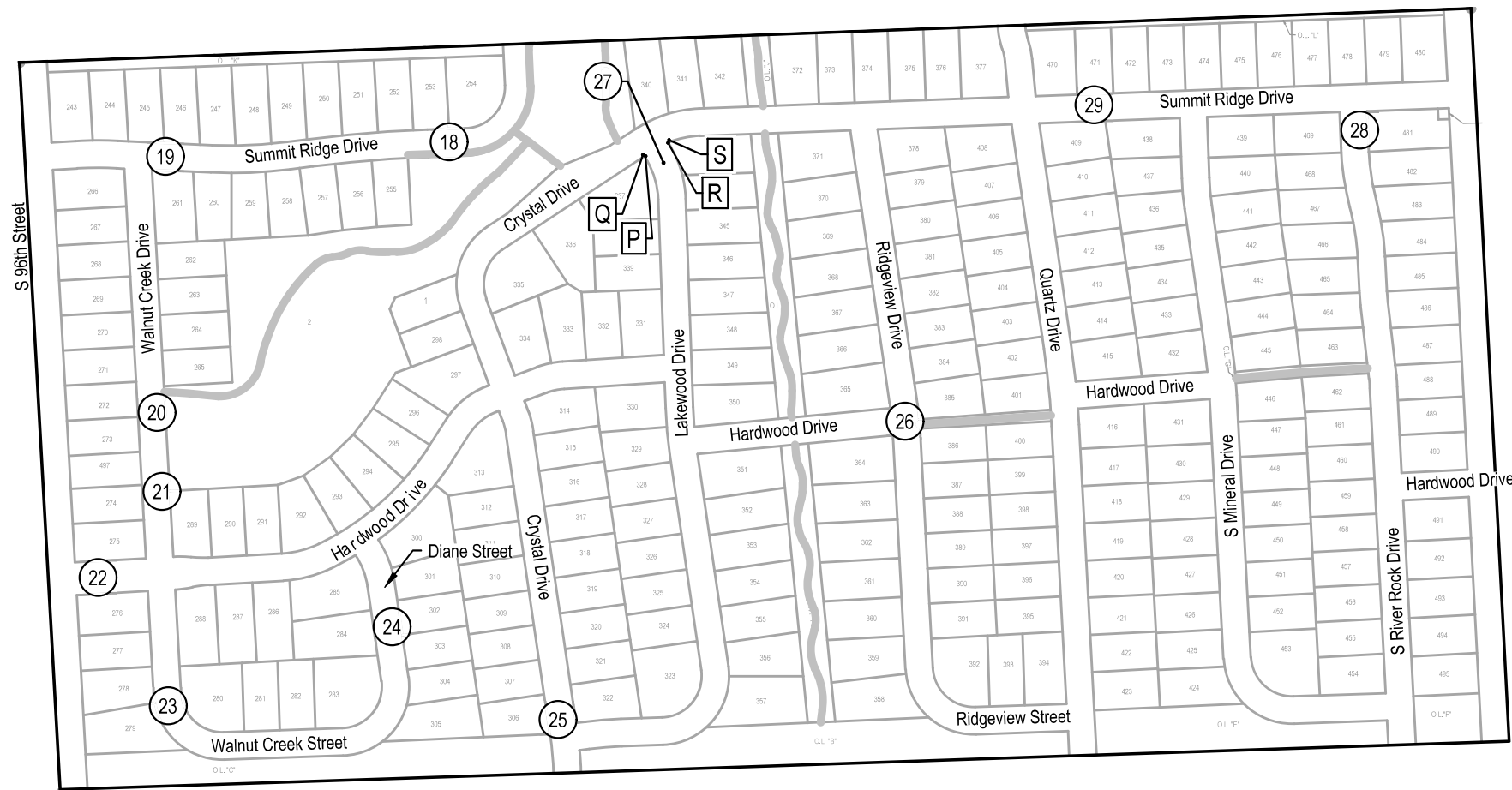
Summit Ridge 2024 Street Reconstruction

SID 245
SARPY COUNTY, NEBRASKA

NORTH

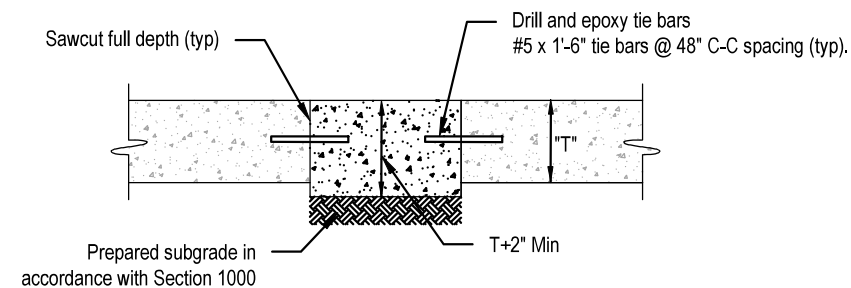
Proj No: P2023019102
 Date: 3/14/2024
 Designer: TAM
 Drawn By: JMB
 Scale: 1" = 300'
 Sheet: 3 of 6

3/14/2024 2:51 PM K:\Projects\2003\019\p22\Engineering\CAD Files\Paving\Summit Ridge 2024 Street Reconstruction-000.dwg
 Jessica Brown

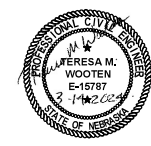


2024 STREET RECONSTRUCTION									
AREA NO.	NO. POURS	SAW CUT L.F.	CURB L.F.	WIDTH	X	LENGTH	LARGE AREA EST S.Y.	SMALL AREA EST S.Y.	NOTES
18	2	42	60	25.5	x	30.0	85.0		
				12.8	x	15.0	21.3		
19	1	50		12.8	x	12.0		17.0	
20	1	41	15	12.8	x	15.0		21.3	
21	1	41	15	12.8	x	15.0		21.3	
22	2	51	50	25.5	x	25.0	70.8		Adjust Manhole
23	2	179	63	12.8	x	108.0	153.0		
24	1	41	15	12.8	x	15.0		21.3	
25	1	41	15	12.8	x	15.0		21.3	
26	1	30	14	7.5	x	7.5		6.3	Adjust Manhole
27	1	56		12.8	x	15.0		21.3	
28	1	42	14	12.8	x	15.0		21.3	
29	2	41	45	25.5	x	15.0	42.5		
				12.8	x	15.0	21.3		

2024 STREET RECONSTRUCTION					
AREA NO.	TYPE	APPROX. DIMEN.		EST S.F.	NOTES
P	Curb Ramp	6.0	x 12.0	72.0	ADA Plate - Cast Iron
Q	Imprinted Surface	6.0	x 12.0	72.0	
R	Curb Ramp	6.0	x 12.0	72.0	ADA Plate - Cast Iron
S	Imprinted Surface	6.0	x 12.0	72.0	



SMALL AREA CONCRETE PAVEMENT REPAIR DETAIL
NOT TO SCALE



E & A CONSULTING GROUP, INC.
 Engineering • Planning • Environmental & Field Services
 10809 Mill Valley Road, Suite 100 • Omaha, NE 68154
 Phone: 402.255.4700 • Fax: 402.255.2599
 www.eaegroup.com
 State of NE Certificate of Authorization #C40008

E & A CONSULTING GROUP, INC.
 Engineering Answers

SUMMIT RIDGE 2024 STREET RECONSTRUCTION
 SID 245
 SAPPY COUNTY, NEBRASKA

SOUTH

Revisions	Date	Description
1	3/14/2024	

Proj No: P20230191022
 Date: 3/14/2024
 Designer: TMM
 Drawn By: JMB
 Scale: 1" = 30'
 Sheet: 4 of 6


3/14/2024 2:52 PM K:\Projects\2023\019\p22\Engineering\CAD Files\paving\Summit Ridge 2024 Street Reconstruction-000.dwg
 Jessica Brown



2024 STREET RECONSTRUCTION									
AREA NO.	NO. POURS	SAW CUT L.F.	CURB L.F.	WIDTH	X	LENGTH	LARGE AREA EST S.Y.	SMALL AREA EST S.Y.	NOTES
1	2	51	28	25.5	x	14.0		39.7	
2	1	36	10	12.8	x	10.0		14.2	
3	1	55	1	12.8	x	15.0		21.3	
4	1	41	15	12.8	x	15.0		21.3	
5	2	56	30	12.8	x	30.0		42.5	
6	2	51	20	25.5	x	10.0		28.3	
7	2	87	38	12.8	x	36.0	51.0		
				12.8	x	24.0	34.0		
8	2	51	60	25.5	x	30.0	85.0		
9	2	51	36	25.5	x	18.0		51.0	Adjust Manhole
10	2	51	50	25.5	x	25.0	70.8		Adjust Manhole
11	1	37	13	13.0	x	12.0		17.3	
12	1	51	25	12.8	x	25.0		35.4	
13	2	58	32	12.8	x	32.0		45.3	
14	1	39		12.8	x	13.0		18.4	
15	1	80		12.0	x	28.0		37.3	
16	2	51	24	25.5	x	12.0		34.0	
17	1	47	15	12.8	x	18.0		25.5	
18	2	42	60	25.5	x	30.0	85.0		
				12.8	x	15.0	21.3		
19	1	50		12.8	x	12.0		17.0	
20	1	41	15	12.8	x	15.0		21.3	
21	1	41	15	12.8	x	15.0		21.3	
22	2	51	50	25.5	x	25.0	70.8		Adjust Manhole
23	2	179	63	12.8	x	108.0	153.0		
24	1	41	15	12.8	x	15.0		21.3	
25	1	41	15	12.8	x	15.0		21.3	
26	1	30	14	7.5	x	7.5		6.3	Adjust Manhole
27	1	56		12.8	x	15.0		21.3	
28	1	42	14	12.8	x	15.0		21.3	
29	2	41	45	25.5	x	15.0	42.5		
				12.8	x	15.0	21.3		

2024 STREET RECONSTRUCTION						
AREA NO.	TYPE	APPROX. DIMEN.			EST S.F.	NOTES
A	Curb Ramp	5.5	x	5.0	27.5	ADA Plate - Cast Iron
B	Sidewalk	4.3	x	20.0	85.0	Adjust Sprinkler (as needed)
C	Curb Ramp	5.5	x	5.0	27.5	ADA Plate - Cast Iron
D	Sidewalk	4.3	x	20.0	85.0	Adjust Sprinkler (as needed)
E	Curb Ramp	5.5	x	5.0	27.5	ADA Plate - Cast Iron
F	Sidewalk	4.3	x	20.0	85.0	Adjust Sprinkler (as needed)
G	Curb Ramp	5.5	x	5.0	27.5	ADA Plate - Cast Iron
H	Sidewalk	4.3	x	20.0	85.0	Adjust Sprinkler (as needed)
I	Curb Ramp	4.0	x	14.0	56.0	ADA Plate - Cast Iron (2'x10')
J	Sidewalk	6.5	x	20.0	130.0	Adjust Sprinkler (as needed)
K	Curb Ramp	5.5	x	5.0	27.5	ADA Plate - Cast Iron
L	Sidewalk	4.3	x	20.0	85.0	Adjust Sprinkler (as needed)
M	Sidewalk	4.0	x	4.0	16.0	Adjust Water Valve
N	Curb Ramp	5.5	x	5.0	27.5	ADA Plate - Cast Iron
O	Sidewalk	4.3	x	20.0	85.0	Adjust Sprinkler (as needed)
P	Curb Ramp	6.0	x	12.0	72.0	ADA Plate - Cast Iron
Q	Imprinted Surface	6.0	x	12.0	72.0	
R	Curb Ramp	6.0	x	12.0	72.0	ADA Plate - Cast Iron
S	Imprinted Surface	6.0	x	12.0	72.0	




E & A CONSULTING GROUP, INC. Engineering • Planning • Environmental & Field Services <small>10809 Mill Valley Road, Suite 100 • Omaha, NE 68154 Phone: 402.255.4700 • Fax: 402.955.3599 www.eandagroup.com State of NE Certificate of Authorization #C40008</small>	
 E & A CONSULTING GROUP, INC. Engineering Answers	
SUMMIT RIDGE 2024 STREET RECONSTRUCTION <small>SID 245 SAPPY COUNTY, NEBRASKA</small>	
TOTAL QUANTITIES	
Revisions Date Description 3/14/2024	Proj No: P20230191022 Date: 3/14/2024 Designer By: TAMM Drawn By: JMB Scale: N/A Sheet: 5 of 6



LEGEND



E & A CONSULTING GROUP, INC. Engineering • Planning • Environmental & Field Services <small>10809 Mill Valley Road, Suite 100 • Omaha, NE 68154 Phone: 402.255.4700 • Fax: 402.255.2599 www.eandagroup.com State of NE Certificate of Authorization #CA0008</small>										
 E & A CONSULTING GROUP, INC. Engineering Answers										
SUMMIT RIDGE 2024 STREET RECONSTRUCTION <small>SID 245 SAPPY COUNTY, NEBRASKA</small>										
COMPOSITE MAP										
Revisions <table border="1"> <thead> <tr> <th>No.</th> <th>Date</th> <th>Description</th> </tr> </thead> <tbody> <tr> <td>1</td> <td>3/14/2024</td> <td>TAM</td> </tr> <tr> <td>2</td> <td>JME</td> <td></td> </tr> </tbody> </table>	No.	Date	Description	1	3/14/2024	TAM	2	JME		Date: 3/14/2024 2:52 PM Project: K:\Projects\2003\019\p22\Engineering\CAD Files\Paving\Summit Ridge 2024 Street Reconstruction-000.dwg Designer: TAM Drawn By: JME Scale: 1" = 300' Sheet: 6 of 6
No.	Date	Description								
1	3/14/2024	TAM								
2	JME									

Jessica Brown